



TT Ploče

TT Slabs

Opis elemenata

Korube ili "TT" ploče su napravljene od prednapregnutog betona. Koristi se za izgradnju ravnih i kosih krovova kao i međuspratnih konstrukcija. Za standardne module širine 205cm u ponudi su četiri visine elemenata H=30cm, H=40cm, H=50cm i H=60cm. Otpornost na požar do R60'.

Montaža

Kod upotrebe kao krovnog pokrivača monolitizacija nije obavezna, na istu se polaže termo a potom i hidroizolacija. Prilikom izrade međuspratne konstrukcije predviđeno je da se preko koruba postavi stabilizujući sloj betona minimaln debljine 5cm, armiran mrežastom armaturom. Kod izvođenju stabilizujuće ploče, gornja površina se zaliva betonom klase ne manje od 30N/mm2, granulometrijskog sastava 0-12.



Podaci Data Sheet

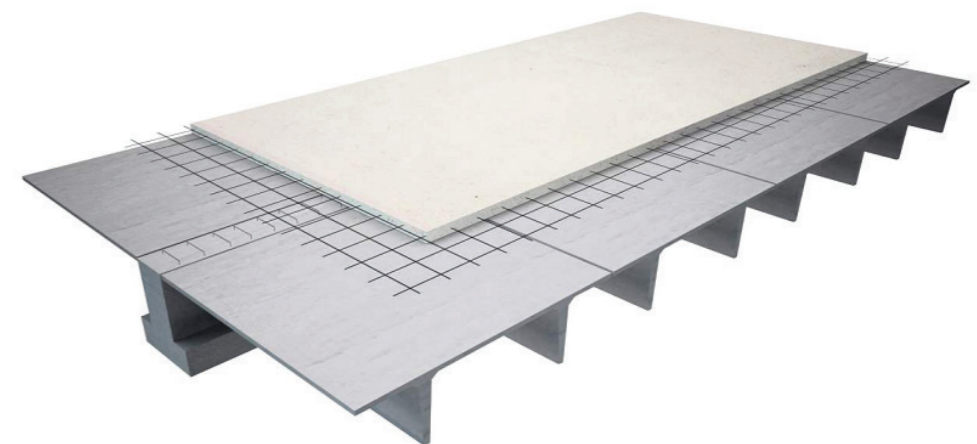
MATERIAL	KARAKTERISTIČNE ČVRSTOĆE N/mm2
MATERIAL	NOMINAL STRENGTH N/mm2
Beton Concrete	MB ≥ 55
Kablovi Tendons	f _{pk} ≥ 1860
Čelik B500 Steel B500	σ _{vk} ≥ 430
Zavarena mrežna armatura Welded Reinforcement Net	σ _{vk} ≥ 390

Description of elements

The ribbed slab systems or TT slabs are made of prestressed concrete. They are used for the construction of flat or pitched roofs and floor structures. For standard 250 cm modules, there are four element heights: H=30cm, H=40cm, H=50cm and H=60cm. Fire resistance R60'.

Mounting

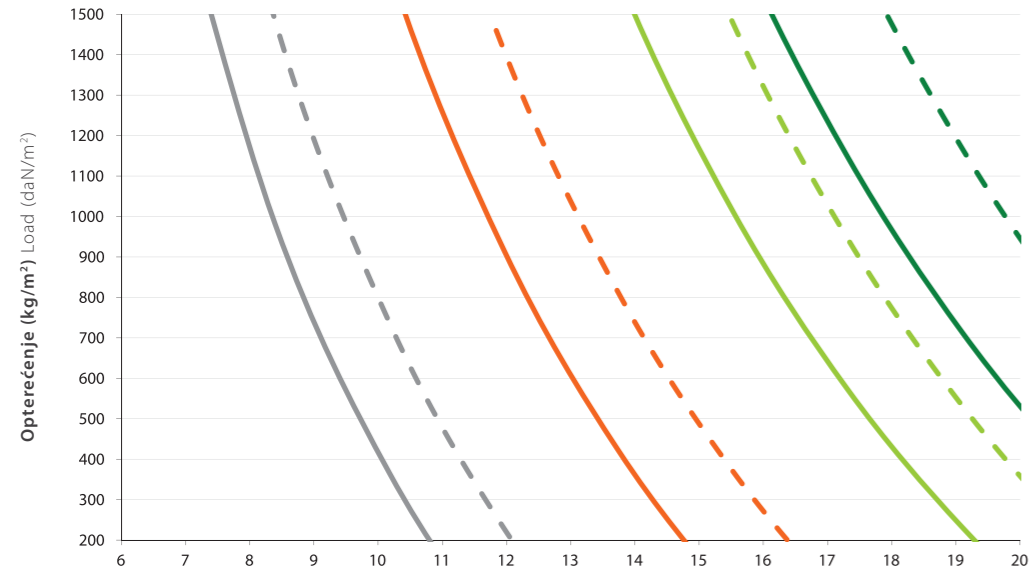
When TT slabs are used as roof coverings, monolithic casting is optional. Thermal insulation then waterproofing membrane are laid over them. When constructing floor slabs, a minimum 5 cm thick stabilizing layer of concrete reinforced with a wire mesh is to be cast over the TT slabs. To stabilize the slab, concrete of a minimum compressive strength 30N/mm2 and particle size distribution 0-12 is to be cast over the upper surface.



TT Ploče

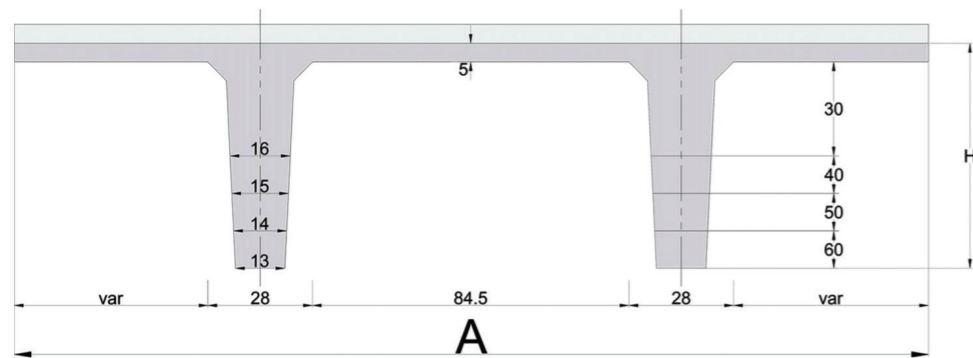
TT Slabs

TT ploče (maks.opterećenje) TT Slabs (MAX LOAD)



Opterećenje = stalno + povremeno + monolitizacija
Load (daN/m) = permanent + variable + monolithic casting

- TT 60 a=2,00m
- TT 60 a=2,45m
- TT 50 a=2,00m
- TT 50 a=2,45m
- TT 40 a=2,00m
- TT 40 a=2,45m
- TT 30 a=2,00m
- TT 30 a=2,45m



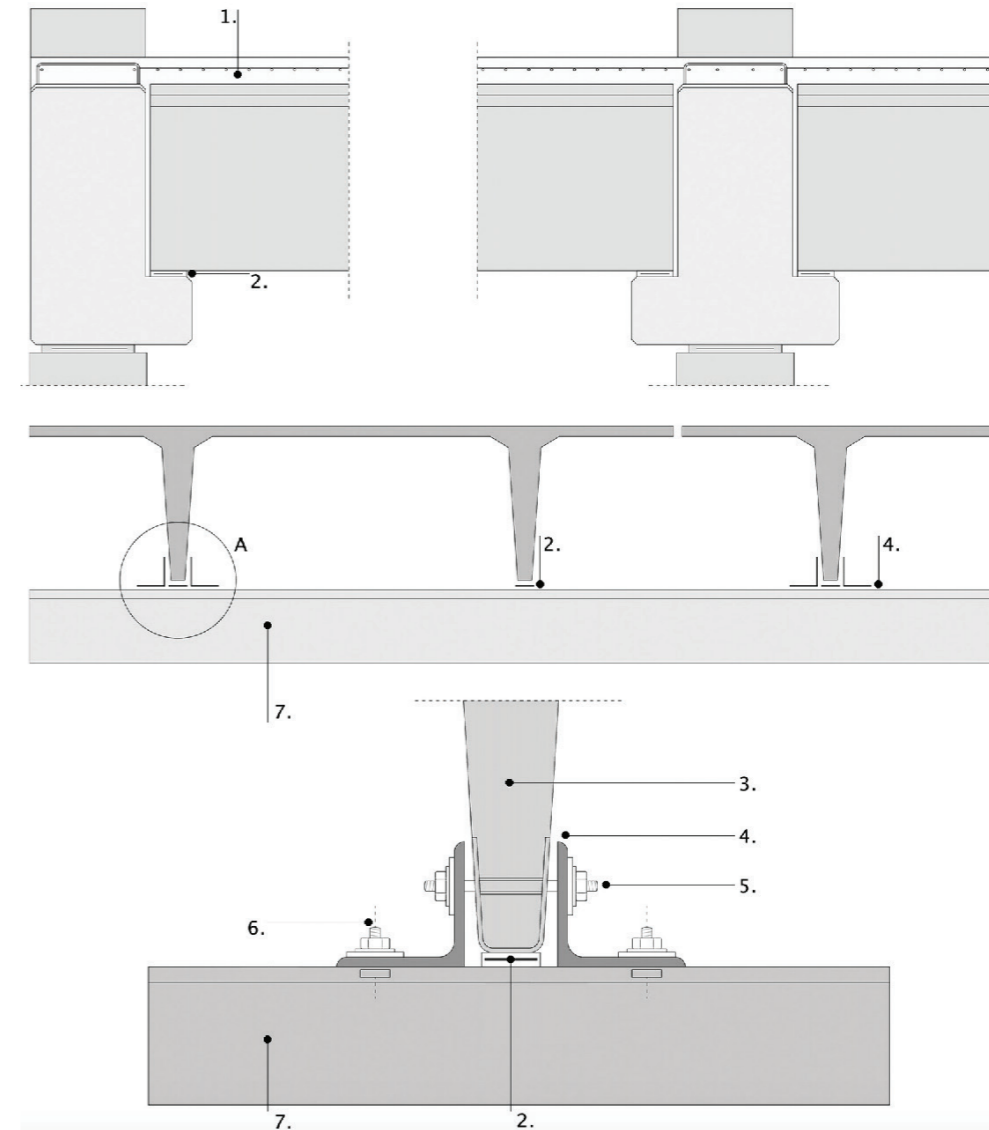
Visina H	Sopstvena težina A=245 cm kg/m ² Dead Weight A=245 cm kg/m ²
30	213
40	244
50	273
60	300

TT Ploče

TT Slabs

Detalj montiranja Mounting detail

1. **Monolitizacija** Monolithic casting
2. **Neoprensko ležište** Neoprene pad
3. **Rebro ploče** Ribbed Slab
4. **Ugaonik** L Profile
5. **Šipka sa navojima** Threaded bar
6. **Noseća greda** Supporting beam



Za detaljna tehnička uputstva i dalje informacije pogledati tehničko uputstvo ili se obratiti za tehničku podršku MG Precast-u
For detailed technical instructions and further information, consult the Technical Manual or contact MG Precast technical support